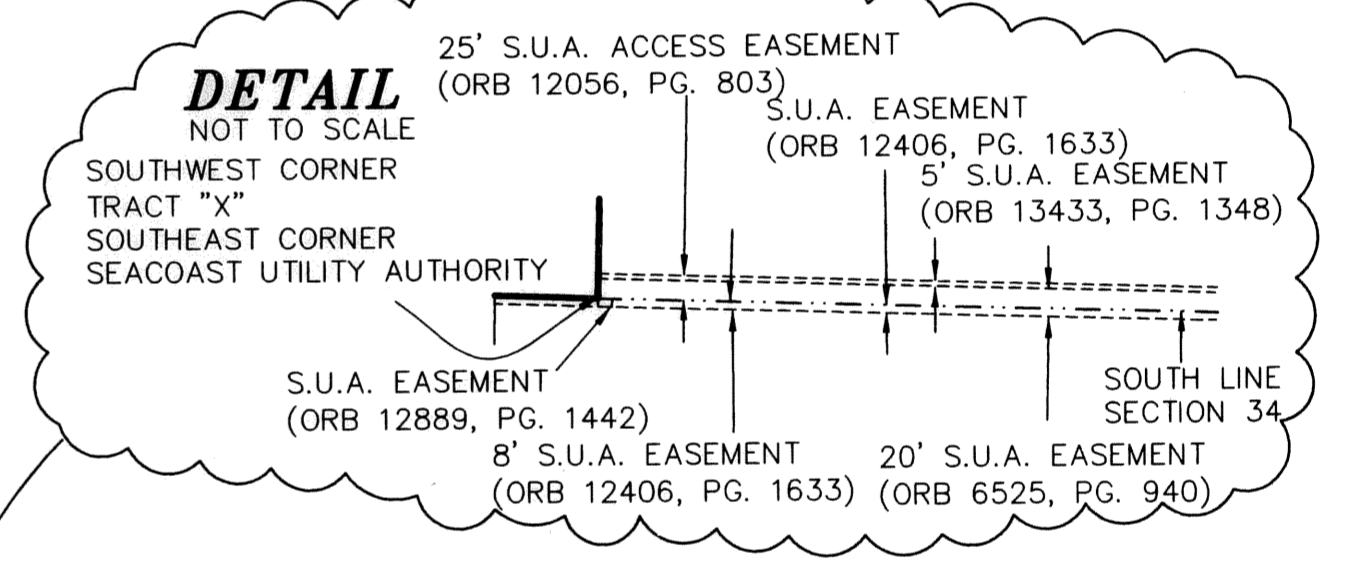
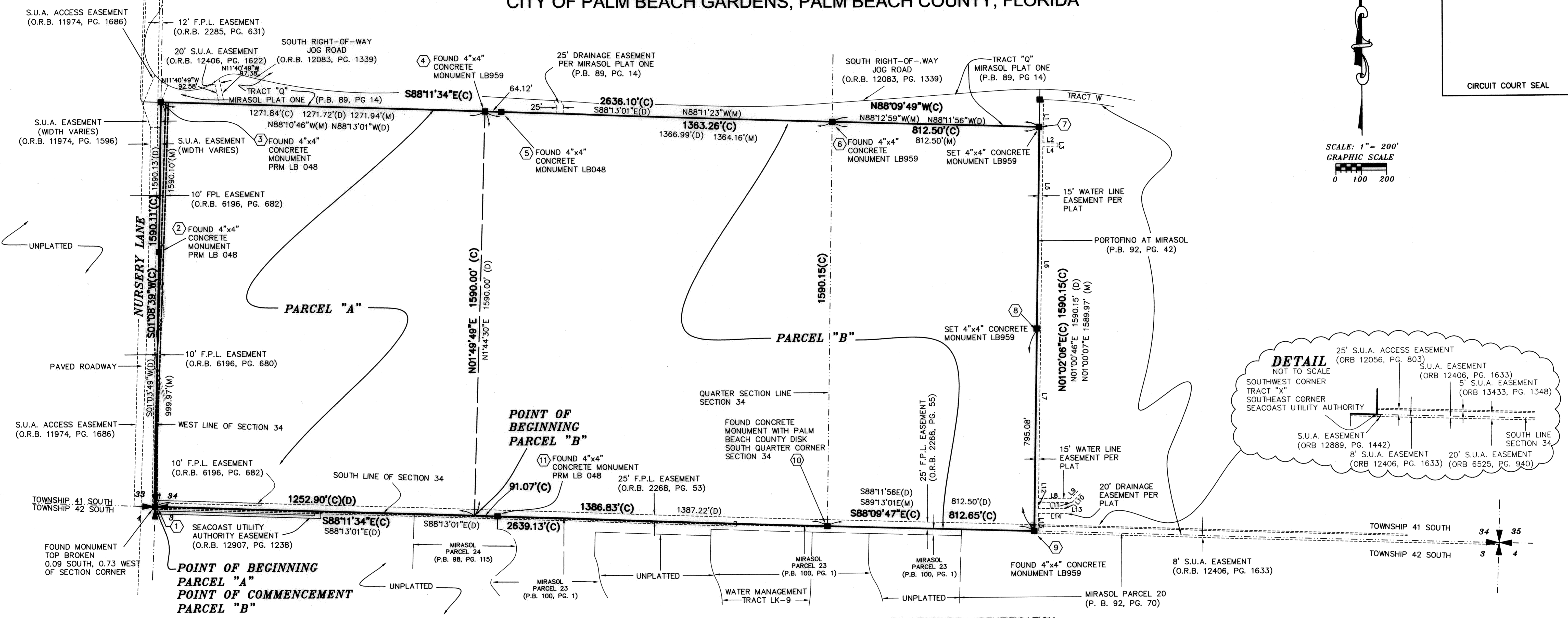
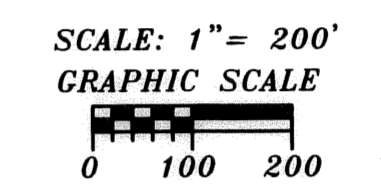


STATE OF FLORIDA
COUNTY OF PALM BEACH
THIS PLAT WAS FILED FOR
RECORD _____ DAY OF _____
AD, 2004 AND DULY RECORDED
IN PLAT BOOK _____ ON PAGES
_____ AND _____
DOROTHY H. WILKEN, CLERK
BY: _____, D.C.

SEACOAST UTILITY AUTHORITY PGA WASTEWATER TREATMENT PLANT

BEING A PORTION OF SECTION 34, TOWNSHIP 41 SOUTH, RANGE 42 EAST,
CITY OF PALM BEACH GARDENS, PALM BEACH COUNTY, FLORIDA

CIRCUIT COURT SEAL



MONUMENTATION IDENTIFICATION

(COORDINATES ARE AT BOUNDARY CORNER)

- 1) FOUND 4"x4" CONCRETE MONUMENT, TOP BROKEN 0.09' SOUTH, 0.73' WEST OF SECTION CORNER NORTH 917382.7298 EAST 934948.2532
- 2) SET 4"x4" CONCRETE MONUMENT PRM, LBFH LB959 NORTH 918177.6169 EAST 934963.3600
- 3) FOUND 4"x4" CONCRETE MONUMENT PRM LB 048 NORTH 918973.0146 EAST 934980.0266
- 4) FOUND 4"x4" CONCRETE MONUMENT, LBFH LB959 NORTH 918932.9041 EAST 936251.3380
- 5) FOUND 4"x4" CONCRETE MONUMENT PRM LB 048 NORTH 918930.8820 EAST 936315.4261
- 6) FOUND 4"x4" CONCRETE MONUMENT, LBFH LB959 NORTH 918889.2216 EAST 937613.7976
- 7) SET 4"x4" CONCRETE MONUMENT PRM, LBFH LB959 NORTH 918863.1266 EAST 938426.8826
- 8) SET 4"x4" CONCRETE MONUMENT PRM, LBFH LB959 NORTH 918068.9021 EAST 938412.5348
- 9) FOUND 4"x4" CONCRETE MONUMENT, LBFH LB959 NORTH 917273.9519 EAST 938398.3285
- 10) FOUND CONCRETE MONUMENT WITH PALM BEACH COUNTY DISK, SOUTH QUARTER CORNER OF SECTION 34 NORTH 917300.0008 EAST 937586.0915
- 11) FOUND 4"x4" CONCRETE MONUMENT PRM LB 048 NORTH 917340.8452 EAST 936291.5189

SURVEYOR'S NOTES

- 1) ALL BEARINGS SHOWN ARE RELATIVE TO THE STATE PLANE COORDINATE SYSTEM WITH N00°00'00"E BEING GRID NORTH. THE SOUTH LINE OF SECTION 34 IS TAKEN TO BEAR SOUTH 88°13'01" EAST, AND ALL OTHER BEARINGS SHOWN HEREON ARE RELATIVE THERETO.
- 2) THERE SHALL BE NO BUILDINGS, OR ANY KIND OF CONSTRUCTION OR TREES OR SHRUBS PLACED ON ANY EASEMENT WITHOUT PRIOR WRITTEN CONSENT OF ALL EASEMENT BENEFICIARIES AND ALL APPLICABLE CITY OF PALM BEACH GARDENS ZONING REGULATIONS APPROVALS OR PERMITS AS REQUIRED FOR SUCH ENCROACHMENTS.
- IN THOSE CASES WHERE EASEMENTS OF DIFFERENT TYPES CROSS OR OTHERWISE COINCIDE, DRAINAGE EASEMENTS SHALL HAVE FIRST PRIORITY, UTILITY EASEMENTS SHALL HAVE SECOND PRIORITY, ACCESS EASEMENTS SHALL HAVE THIRD PRIORITY AND ALL OTHER EASEMENTS SHALL BE SUBORDINATE TO THESE WITH THEIR PRIORITIES BEING DETERMINED BY THE USE RIGHTS GRANTED.
- 3) ALL LINES WHICH INTERSECT CURVES ARE NON-RADIAL TO THOSE CURVES UNLESS OTHERWISE NOTED. ((R) DENOTES RADIAL)
- 4) THE BUILDING SETBACK LINE SHALL BE AS REQUIRED BY CURRENT CITY OF PALM BEACH GARDENS ZONING REGULATIONS.
- 5) NOTICE: THIS PLAT, AS RECORDED IN ITS GRAPHIC FORM, IS THE OFFICIAL DEPICTION OF THE SUBDIVIDED LANDS DESCRIBED HEREIN AND WILL IN NO CIRCUMSTANCES BE SUPPLANTED IN AUTHORITY BY ANY OTHER GRAPHIC OR DIGITAL FORM OF THE PLAT. THERE MAY BE ADDITIONAL RESTRICTIONS THAT ARE NOT RECORDED ON THIS PLAT THAT MAY BE FOUND IN THE PUBLIC RECORDS OF THIS COUNTY.

LEGEND

- = 4"x4" CONCRETE MONUMENT
- = PERMANENT REFERENCE MONUMENT "LBFH Inc. - LB959"
- S.U.A. = SEACOAST UTILITY AUTHORITY
- F.P.L. = FLORIDA POWER AND LIGHT COMPANY
- O.R.B. = OFFICIAL RECORDS BOOK
- PG. = PAGE
- P.B. = PLAT BOOK
- (C) = CALCULATED
- (D) = DEED
- (M) = MEASURED
- ⊕ = SECTION CORNER

lbh CONSULTING CIVIL ENGINEERS, SURVEYORS & MAPPERS
 "Partners For Results, Value By Design"
 3550 S.W. Corporate Parkway, Palm City, Florida 34990
 (772) 286-3883 Fax: (772) 286-3925
 BPR & FBPE License No: 959 www.lbh.com

P:\04\009\summary\PGA WWT\BWP\PLAT\04099PLAT1.DWG, SHEET 2, 11/22/2004, 12:02:24 PM, lbfh, lbfh.linc